

Courtesy Of Amanda Olivari Of RE/MAX River City

# **\$1,050,000 - 14214 Ravine Drive Nw, Edmonton**

MLS® #E4233750

**\$1,050,000**

4 Bedroom, 4.00 Bathroom, 1,843 sqft  
Single Family on 0.00 Acres

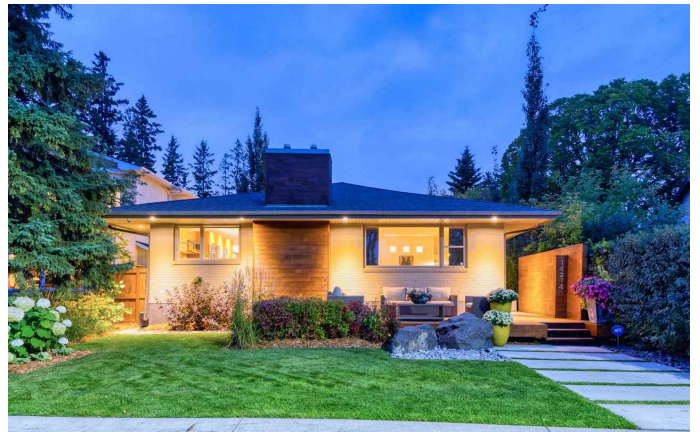
Grovenor, Edmonton, AB

RAVINE VIEWS AT ITS BEST! Prime serene location fronting onto Mackinnon Ravine. Over 3000 sq ft of total living space. Recent Upgrades throughout easily set this unique home apart. Newly renovated vanities, showers and storage in all bathrooms. Closets in all bedrooms have been upgraded with built-in units throughout. Brand new mudroom cabinetry added to make back access a organizers dream. Fireplace and new mantel create a beautiful focal point within the oversized open living looking out onto the ravine. Kitchen boast ample storage with upgraded appliances throughout. Downstairs you will find in-floor heating leading into a games room, media room including bar and gas fireplace with stunning wine room. Freshly renovated 4th bedroom with walk in closet leading into stunning en-suite. New laundry room downstairs with ample storage! The backyard is the true focal point of this home, fully landscaped with relaxing water feature. Double garage, 8 ft overhead doors, heated and insulated. Your new home awaits!

Built in 1957

## **Essential Information**

MLS® #	E4233750
Price	\$1,050,000



Bedrooms	4
Bathrooms	4.00
Full Baths	3
Half Baths	1
Square Footage	1,843
Acres	0.00
Year Built	1957
Type	Single Family
Sub-Type	Residential Detached Single Family
Style	Bungalow
Status	ACTIVE

### Community Information

Address	14214 Ravine Drive Nw
Area	Edmonton
Subdivision	Grovenor
City	Edmonton
County	ALBERTA
State	AB
Zip Code	T5N 3M2

### Amenities

Features	Air Conditioner, Closet Organizers, Deck, No Smoking Home, Bar, Porch
Parking	Double Garage Detached
# of Garages	2

### Interior

Interior	Carpet, Ceramic Tile, Hardwood
Interior Features	Air Conditioning-Central, Dryer, Refrigerator, Stove-Gas, Window Coverings, Humidifier-Power (Furnace), Oven-Built-In, Oven-Microwave, Washer - Energy Star, Oven Built-In-Two, Dishwasher - Energy Star
Heating	Forced Air-1
Fireplace	Yes
Fireplaces	Mantel, Electric
# of Stories	2
Has Basement	Yes
Basement	Full, Fully Finished

### Exterior

Exterior	Brick, Cedar
Exterior Features	Fenced, Landscaped, Schools, Shopping Nearby, Back Lane, Private Setting, Ravine View, River Valley View
Roof	Asphalt Shingles
Construction	Wood Frame
Foundation	Concrete

### **Additional Information**

Date Listed            March 19th, 2021

Data is deemed reliable but is not guaranteed accurate by the REALTORS® Association of Edmonton. Copyright 2021 by the REALTORS® Association of Edmonton. All rights reserved.

Listing information last updated on June 14th, 2021 at 12:46am CDT