

Courtesy Of Jay Cooper Of RE/MAX River City

\$719,500 - 2216 Stan Waters Avenue Nw Nw, Edmonton

MLS® #E4239880

\$719,500

5 Bedroom, 5.00 Bathroom, 3,202 sqft
Single Family on 0.11 Acres

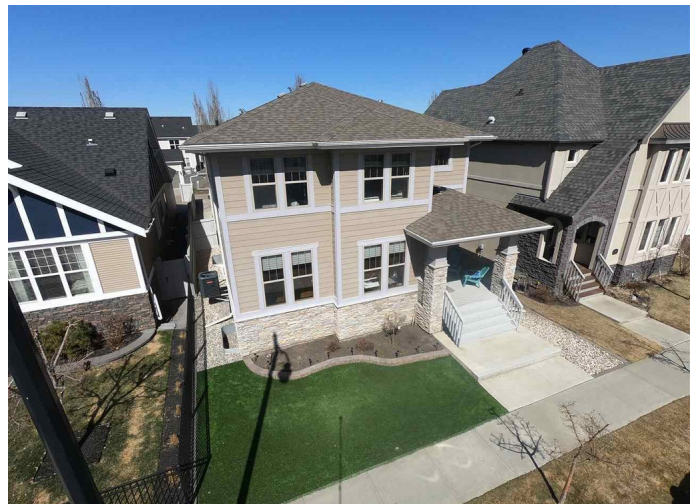
Griesbach, Edmonton, AB

Located on a quiet street in the desirable neighborhood of Griesbach. With 9' ceiling on the main floor and open floor plan design. Featuring a triple car garage with a GARDEN SUITE perfect for large family or for added income. Includes cabinets to the ceiling, large island, walk in pantry, with granite countertops. Spacious great room with gas fireplace and hardwood flooring. Formal living/dining room. Central AC. 2nd floor includes bonus room great for office space or kids play area. Spacious primary bedroom featuring 5 pc ensuite and walk in closet. 2 other full size bedroom with a 4 pc bathroom. Finished basement has extra large rec room, 4th bedroom and another 4pc bath. Modern 1 bedroom garden suite with exceptional kitchen, in suite laundry, 4pc bath, living room and bedroom. Indoor access to garden suite and garage. Deck & fenced yard. Close to several lakes, parks and transportation. This great family home could be yours.

Built in 2010

Essential Information

MLS® #	E4239880
Price	\$719,500
Bedrooms	5
Bathrooms	5.00



Full Baths	4
Half Baths	1
Square Footage	3,202
Acres	0.11
Year Built	2010
Type	Single Family
Sub-Type	Residential Detached Single Family
Style	2 Storey
Status	ACTIVE

Community Information

Address	2216 Stan Waters Avenue Nw Nw
Area	Edmonton
Subdivision	Griesbach
City	Edmonton
County	ALBERTA
Province	AB
Postal Code	T5E 5Y8

Amenities

Features	Ceiling 9 ft., Deck, No Smoking Home, Air Conditioner
Parking Spaces	3
Parking	Triple Garage Attached
# of Garages	3

Interior

Interior	Carpet, Ceramic Tile, Hardwood
Interior Features	Garage Opener, Window Coverings, Dryer-Two, Refrigerators-Two, Stoves-Two, Washers-Two, Dishwasher-Two, Microwave Hood Fan-Two, Air Conditioning-Central, Garage Control, Garburator
Heating	Forced Air-2
Fireplace	Yes
Fireplaces	Gas, Glass Door, Mantel
# of Stories	3
Has Basement	Yes
Basement	Full, Fully Finished

Exterior

Exterior	Stone, Hardie Board Siding
----------	----------------------------

Exterior Features	Fenced, Playground Nearby, Public Transportation, Schools, Shopping Nearby, Low Maintenance Landscape
Roof	Asphalt Shingles
Construction	Wood Frame
Foundation	Concrete

Additional Information

Date Listed April 20th, 2021

Data is deemed reliable but is not guaranteed accurate by the REALTORS® Association of Edmonton. Copyright 2021 by the REALTORS® Association of Edmonton. All rights reserved.

Listing information last updated on July 25th, 2021 at 10:46pm CDT