

# \$1,095,000 - 10230 125 Street Nw, Edmonton

MLS® #E4257846

## \$1,095,000

3 Bedroom, 3.00 Bathroom, 1,994 sqft  
Single Family on 0.09 Acres

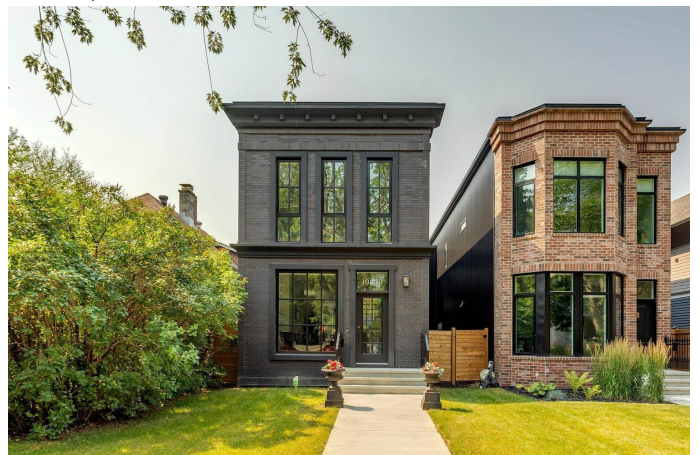
Westmount, Edmonton, AB

Stunning home in an EXCEPTIONAL LOCATION. True Urban Living in Groat Estates with amenities galore within a 1 block radius. Nestled on a beautiful tree-lined street, this home is breathtaking from the outside in with the brick faced front elevation inviting you into luxury from top to bottom. Upon entry you will notice the custom partition wall, huge living room includes gas fireplace & shiplap wall detail. The main level includes a generous sized dining area and a stunning kitchen with tons of cabinetry, quartz counters & stainless steel appliances. The hardwood which stretches the entire property and custom open-rise staircase with frameless glass railings add that luxurious feel. The upper level is where you will find 3 bedrooms, one of which is the incredible master bdrm with huge floor to ceiling windows, 8ft doors & a 5pc spa like ensuite. The home comes landscaped, includes 20 ft composite deck, A/C, built in sound, 9ft garage door w/ electric motor & an upgraded panel & wiring for charging station.

Built in 2019

## Essential Information

MLS® #	E4257846
Price	\$1,095,000
Bedrooms	3



Bathrooms	3.00
Full Baths	2
Half Baths	1
Square Footage	1,994
Acres	0.09
Year Built	2019
Type	Single Family
Sub-Type	Residential Detached Single Family
Style	2 Storey
Status	ACTIVE

### Community Information

Address	10230 125 Street Nw
Area	Edmonton
Subdivision	Westmount
City	Edmonton
County	ALBERTA
Province	AB
Postal Code	T5N 1S9

### Amenities

Features	Air Conditioner, Ceiling 10 ft., Deck, Infill Property
Parking	Double Garage Detached
# of Garages	2

### Interior

Interior	Ceramic Tile, Hardwood
Interior Features	Dishwasher-Built-In, Hood Fan, Refrigerator, Wine/Beverage Cooler, Oven-Built-In, Stove-Countertop Gas
Heating	Forced Air-1
Fireplace	Yes
Fireplaces	Gas, Direct Vent
# of Stories	2
Has Basement	Yes
Basement	Full, Unfinished

### Exterior

Exterior	Brick, Metal
Exterior Features	Back Lane, Fenced, Golf Nearby, Landscaped, Playground Nearby,

Public Swimming Pool, Public Transportation, Schools, Shopping  
Nearby

Roof Asphalt Shingles

Construction Wood Frame

Foundation Concrete

### **School Information**

Elementary Oliver School

Middle Westminster School

High Ross Sheppard

### **Additional Information**

Date Listed August 8th, 2021

Data is deemed reliable but is not guaranteed accurate by the REALTORS® Association of Edmonton. Copyright 2021  
by the REALTORS® Association of Edmonton. All rights reserved.

Listing information last updated on October 17th, 2021 at 9:16pm CDT